

The Exo family offers a variety of solutions with a perfect balance of function and fashion, where surface-mounted downlights are preferred. With options ranging from a simple cube to an elongated rectangular shade, the Exo family is the ultimate in minimalist form with a specification-grade, multifunction downlight. Each LED module's high-performance output is harnessed by your choice of four field-changeable optics ranging from a 20° beam for task lighting to a 60° beam for general illumination. Integrated 0°-35° tool-free beam aiming offers additional precision control.

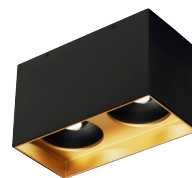
Each LED module produces 1047 delivered lumens while consuming 14 watts, and is offered in 2700K, 3000K and 3500K. Light output is harnessed by 20°, 30°, 40° or 60° field changeable optics, and each fixture includes a 120-277V driver which is dimmable (ELV, Triac and 0-10V) for maximum flexibility.

Product features:

- Three shade sizes for maximum design and performance flexibility
- Complementary pendant and flush mount versions available
- Specification-grade beam spread options for spot to general illumination applications
- Unique tool-free aiming for incredible versatility
- Universally dimmable LED lamping options to create the desired ambiance
- Matte Black and Matte White finish options
- Three decorative trim options for a custom look
- 5-year warranty

SPECIFICATIONS

SHADE HEIGHT	6.1", 18" options
SHADE WIDTH	5.2"
SHADE LENGTH	5.2" single / 10.4" dual
DELIVERED LUMENS	1047 single / 1635 dual
WATTS	14 single / 28 dual
VOLTAGE	Universal 120V-277V
DIMMING	Universal 0-10V, ELV, Triac
LIGHT DISTRIBUTION	20°, 30°, 40°, 60° field changeable optics
MOUNTING OPTIONS	Ceiling (flush, 12", 24", 36", 48" stem) Pendant: Integrated ball joint that accommodates sloped ceilings up to 45°
ADJUSTABILITY	Spot module: 35° tilt and 360° rotation with tool-free locking
CCT	2700K, 3000K, 3500K
CRI	90+
COLOR BINNING	3-Step
GENERAL LISTING	ETL
CALIFORNIA TITLE 24	Can be used to comply with CEC 2019 Title 24 Part 6 for outdoor use. Registration with CEC Appliance Database not required.
FIELD SERVICEABLE LED	Yes
CONSTRUCTION	Steel
FINISH	Matte Black, Matte White
TRIM	Black, White, Gold Haze
LED LIFETIME	50,000 to L70
WARRANTY*	5 years



EXO DUAL shown in Matte Black/Gold Haze

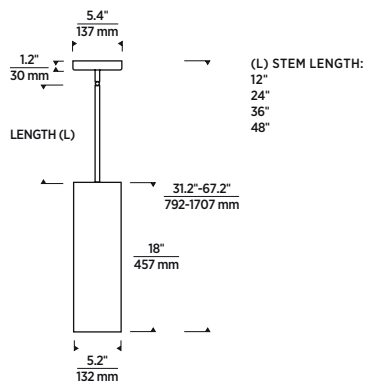
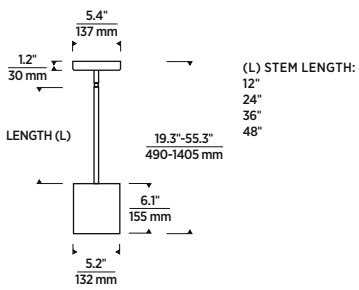


EXO PENDANT shown in Matte White/Black 6"



EXO CEILING shown in Matte White/White 18"

* Visit techlighting.com for specific warranty limitations and details.



Matte Black/
Black
6"



Matte Black/
Black
6"



Matte White/
Black
6"



Matte White/
Black
18"



Matte Black/
Gold Haze
6"



Matte Black/
Gold Haze
18"



Matte White/
Gold Haze
6"



Matte White/
Gold Haze
18"



Matte Black/
White
6"



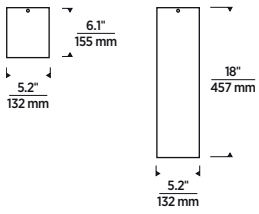
Matte Black/
White
18"



Matte White/
White
6"



Matte White/
White
18"



Matte Black/
Black
6"



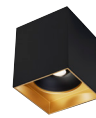
Matte Black/
Black
6"



Matte White/
Black
6"



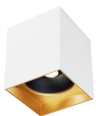
Matte White/
Black
6"



Matte Black/
Gold Haze
6"



Matte Black/
Gold Haze
18"



Matte White/
Gold Haze
6"



Matte White/
Gold Haze
18"



Matte Black/
White
6"



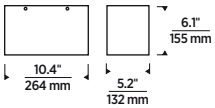
Matte Black/
White
18"



Matte White/
White
6"



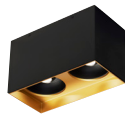
Matte White/
White
18"



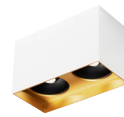
Matte Black/
Black



Matte White/
Black



Matte Black/
Gold Haze



Matte White/
Gold Haze



Matte Black/
White



Matte White/
White

PHOTOMETRICS*

*For latest photometrics, please visit www.techlighting.com

EXO SINGLE PENDANTS AND CEILING

Description: LED Multiples Module
40° Beam - 0° Tilt, 3000K

Model: LED Multiples 40° Low

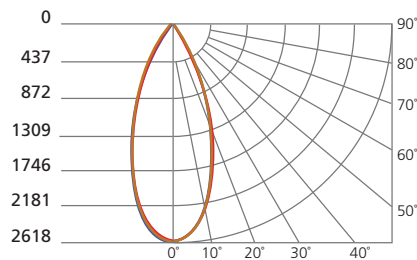
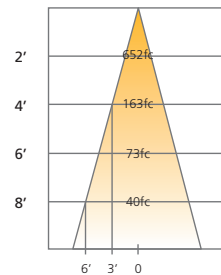
Input Power (Watts): 12.4

Input Power Factor: 0.98

Absolute Luminous Flux (Lumens): 1056

Lumen Efficacy (Lumens per Watt): 85.2

ANGLE	0°	45°	90°
0°	2188	2188	2188
5°	2137	2136	2106
10°	1956	1938	1893
15°	1633	1608	1536
20°	1206	1175	1082
25°	736	705	632
30°	377	362	318
35°	179	174	151
40°	82	81	74
45°	42	42	39
50°	24	23	22
55°	14	13	12
60°	8	8	8
65°	5	5	5
70°	2	2	2
75°	1	0	0
80°	0	0	0
85°	0	0	0
90°	0	0	0



ORDERING INFORMATION

EXO PENDANTS

PRODUCT	SHADE HEIGHT	STEM LENGTH (A)	BEAM SPREAD	SHADE COLOR / HARDWARE FINISH	TRIM FINISH	LAMP
700TDEXOP	6 6.1"	12 12"	20 20°	B MATTE BLACK	B BLACK	-LED927 LED 90 CRI 2700K 120V 277 UNV
	18 18"	24 24"	30 30°	W MATTE WHITE	G GOLD HAZE	-LED930 LED 90 CRI 3000K 120V 277 UNV
		36 36"	40 40°		W WHITE	-LED935 LED 90 CRI 3500K 120V 277 UNV
		48 48"	60 60°			

EXO CEILING

PRODUCT	SHADE HEIGHT	BEAM SPREAD	SHADE COLOR	TRIM FINISH	LAMP
700FMEXO	6 6.1"	20 20°	B MATTE BLACK	B BLACK	-LED927 LED 90 CRI 2700K 120V 277 UNV
	18 18"	30 30°	W MATTE WHITE	G GOLD HAZE	-LED930 LED 90 CRI 3000K 120V 277 UNV
		40 40°		W WHITE	-LED935 LED 90 CRI 3500K 120V 277 UNV
		60 60°			

EXO DUAL

PRODUCT	SHADE HEIGHT	BEAM SPREAD	SHADE COLOR	TRIM FINISH	LAMP
700FMEXOD	6 6.1"	20 20°	B MATTE BLACK	B BLACK	-LED927 LED 90 CRI 2700K 120V 277 UNV
		30 30°	W MATTE WHITE	G GOLD HAZE	-LED930 LED 90 CRI 3000K 120V 277 UNV
		40 40°		W WHITE	-LED935 LED 90 CRI 3500K 120V 277 UNV
		60 60°			

LENSES/LOUVERS

PRODUCT	TYPE	FINISH
MOC	GG PLAIN GLASS	-B BLACK
	SF SOFT FOCUS	-W WHITE
	LL LINEAR SPREAD	
	EC EGGCRATE LOUVER	
	LS1 1" LONG SNOOT	
	LS12 1/2" LONG SNOOT	

REPLACEMENT OPTICS

PRODUCT	BEAM SPREAD
353LEDGATOPT	20 20°
	30 30°
	40 40°
	60 60°

PROJECT INFO

FIXTURE TYPE & QUANTITY	JOB NAME & INFO	NOTES

