

Phobos Short Flush Mount

700FMPHB6_ 1.0



FLUSH

GENERAL PRODUCT INFORMATION:

These fixtures are intended to be installed utilizing NEC compliant junction boxes.

This product is suitable for damp locations.

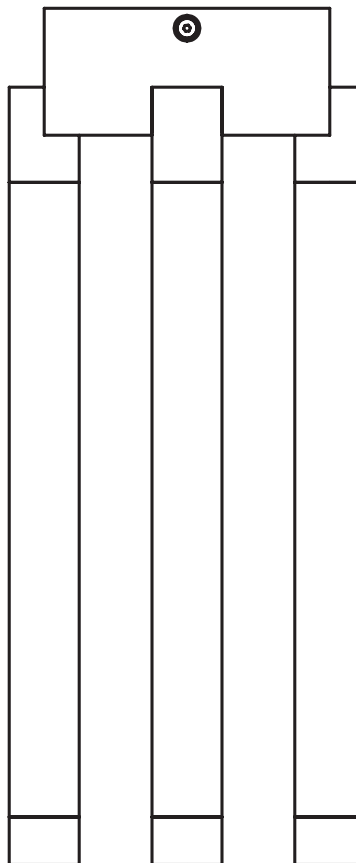
120V dimmable with most LED compatible ELV and TRIAC dimmers.

This instruction shows a typical installation.

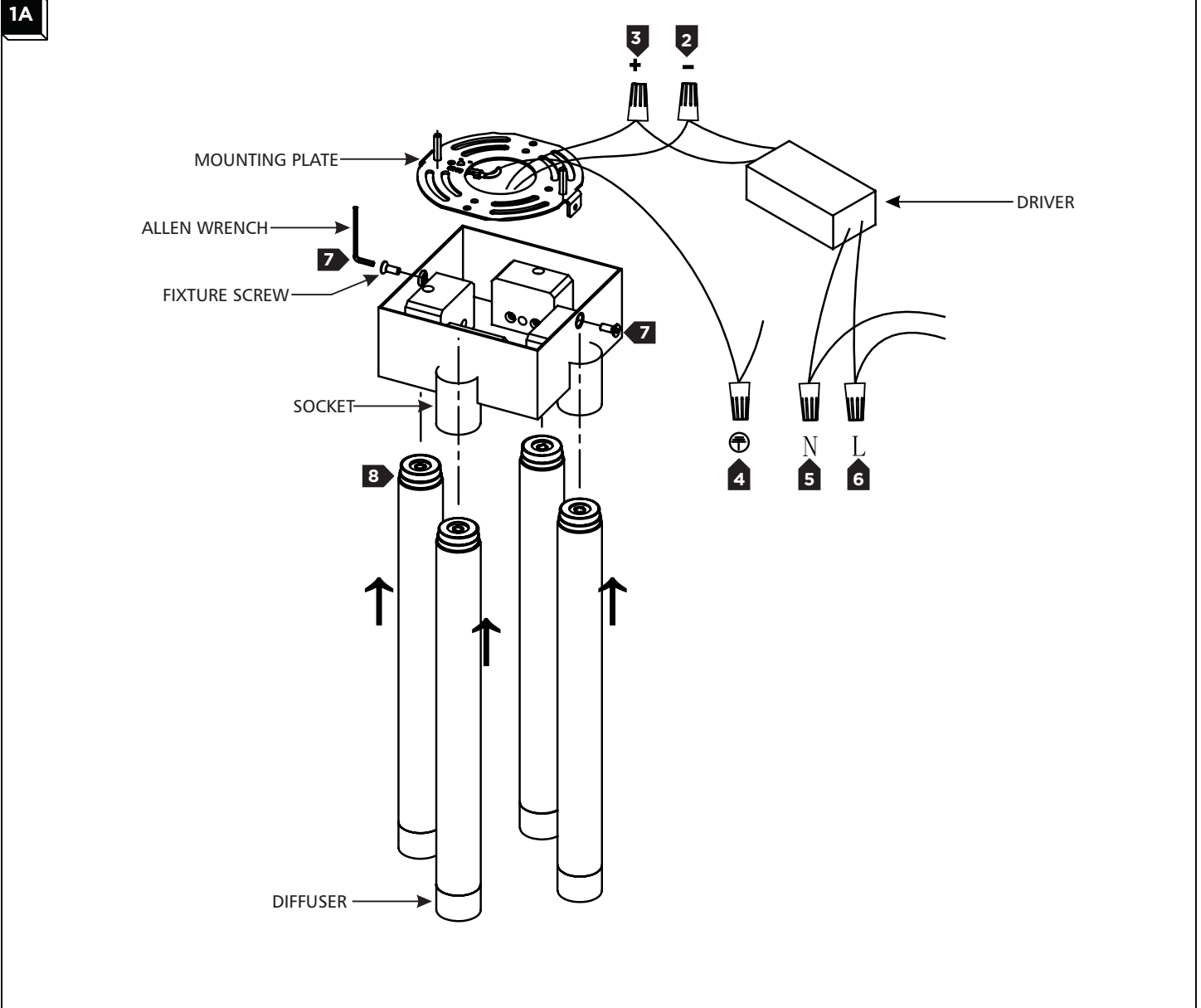


CAUTION - RISK OF FIRE
This product must be installed in accordance with the applicable installation code by a person familiar with the construction and operation of the product and the hazards involved.
Use minimum 90°C supply conductors.

SAVE THESE INSTRUCTIONS!



Install the Fixture



- 1 Install the mounting plate to the electrical box with the two provided #8-32 screws.
- 2 Connect the negative (-) fixture wire to the negative (-) output driver wire with a wire nut.
- 3 Connect the positive (+) fixture wire to the positive (+) output driver wire with a wire nut.
- 4 Connect the fixture to a suitable ground in accordance with local electrical codes.
- 5 Connect the white input driver wire to the neutral power line wire with a wire nut.
- 6 Connect the black input driver wire to the hot power line wire with a wire nut.
- 7 Properly place the wires and wire nut connections into the junction box / fixture, install the fixture onto the mounting plate and align the holes, finally secure the fixture in place with fixture screws. using the provided Allen wrench.
- 8 Install the diffusers by inserting them firmly into the sockets.

 **TECH LIGHTING**

7400 Linder Ave., Skokie, IL 60077
T 847.410.4400 | F 847.410.4500
www.techlighting.com